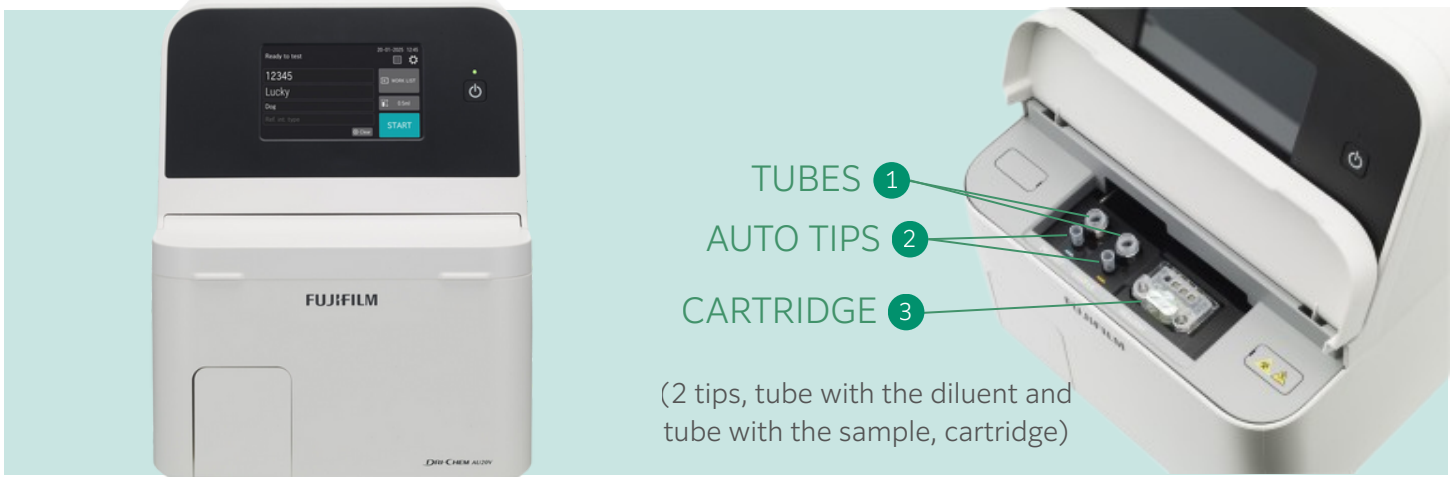


How to use FUJI DRI-CHEM AU20V

Normal Measurement



Insert the specimen, tip and cartridge.

Press the button.



Automatic Measurement with Dilution (for v-COR and vf-SAA only)

Insert a tube of diluent solution (saline).

Note: For 0.5 ml tube, saline must be more than 0.2 ml. For 1.5 ml tube, saline must be more than 0.6 ml.

Set the cartridge and press button.

Use the results as shown in the display.
 No calculation with the dilution factor needed.

Diluent solution
 (saline)



Specimen
 (serum)

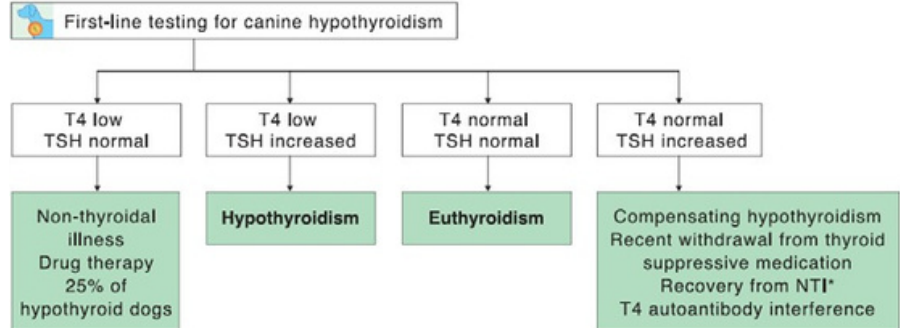


DRI-CHEM AU20V Reference Ranges

Parameter	Reference Range
v-T4	1.3 -2.9 µg /dL (16.7 – 103.0 nmol/L)
vc-TSH	<0.5ng /ml
v-COR	1-6 µg /dL (27.6-165.5 nmol/L)

Tests and Diagnostics for Hypothyroidism

In order to identify the cause of disease, both T4 and TSH testing are recommended. The British Small Animal Veterinary Association's (BSAVA) guidelines recommend testing both T4 and TSH instance if there are symptoms of thyroid disease.



This diagnosing flowchart is based on BSAVA manual of canine and feline endocrinology fourth edition.
* NTI: Non-Thyroidal Illness

Tests and Diagnostics Using Cortisol

ACTH Stimulation Test

Pre-ACTH cortisol level	Post-ACTH cortisol level	Interpretation
1.0 - 6.0 µg/dL [1]	≥24.0 µg/dL [2]	Consistent with Cushing's syndrome.
	19.0 - 24.0 µg/dL [2]	Equivocal; Cushing's syndrome possible.
	8.0 - 18.0 µg/dL [2]	Normal
	<8.0 µg/dL [2]	Consistent with iatrogenic Cushing's syndrome
	<2.0 µg/dL [2]	Consistent with hypoadrenocorticism.

Low-Dose Dexamethasone Suppression Test

Pre-Suppression cortisol level	4-hour cortisol level	8-hour cortisol level	Interpretation
1.0 - 6.0 µg/dL [1]	—	<1.4 µg/dL [2]	Normal
	—	≥1.4 µg/dL and <50 % of Pre-Suppression [2]	Consistent with pituitary-dependent hyperadrenocorticism (PDH).
	<1.4 µg/dL or <50 % of Pre-Suppression [2]	≥1.4 µg/dL [2]	Consistent with PDH.
	≥1.4 µg/dL [2]	≥1.4 µg/dL [2]	Consistent with PDH or adrenal tumor (AT).

High-Dose Dexamethasone Suppression Test

Pre-Suppression cortisol level	8 - hour cortisol level	Interpretation
1.0 - 6.0 µg/dL [1]	<1.4 µg/dL or <50 % of Pre-Suppression [2]	Consistent with PDH.
	≥50 % of Pre-Suppression [2]	Consistent with PDH or AT.

[1] Feldman EC, Nelson RW. *Canine and Feline Endocrinology and Reproduction*, third edition. USA: Saunders: 2003.
[2] Nelson RW, Couto CG. *Small Animal Internal Medicine*, third edition. USA: Mosby: 2003.

